



Serial Codes on PODULES

To program a Podule you need PodFlow 3 installed on the computer to be used. The latest version is available from the downloads page at www.ikonavs.com.

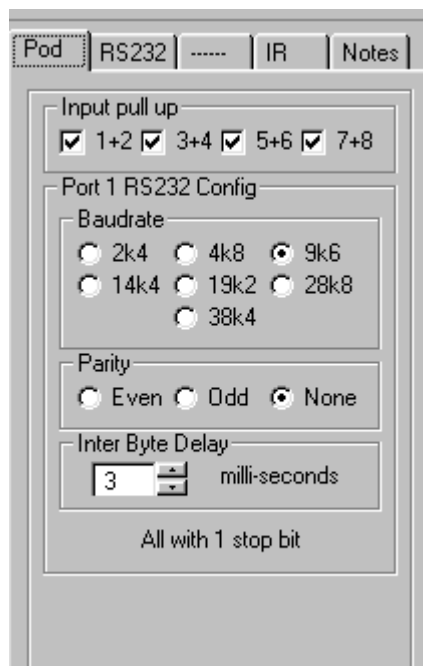
This document is intended as a simple guide on changing Serial strings and Serial configuration on Podules.

Before you begin.

Connect. Using a 9pin D female to female straight cable connect the PC to the Podule. The cable can be a fully populated type or use only pins 2, 3 and 5. Podules will operate via a serial to USB converter if no serial port is available.

Changing Serial Settings

Start PodFlow and from the File Menu open the file to be altered. Click on the Pod tab to the right of the main working area to display the RS232 configuration.



← Select required baud rate.

← Set parity.

← Normally OK as set, may need increasing with some old equipment.

All Podules have at least one serial port; the General Podule has two that are individually configured.

Changing Strings

Strings can be changed by either double clicking on the Serial Input or Output or by clicking on the RS232 tab.



The O1 and O2 on the symbol identify the message number.

Double Click view

Tab view

RS232 Input config

Select Message

1 9 17
 2 10 18
 3 11 19
 4 12 20
 5 13 21
 6 14 22
 7 15 23
 8 16 24

Display/Edit
 Hex ASCII Decimal

Size
 Number bytes: 4

Contents

1-8	1	30	COPY PASTE
	2	30	
	3	21	
9-16	4	0D	
	5		
	6		
17-24	7		
	8		
25-32			

Name: READY

Also used by: None

Done

Pod RS232 IR Notes

Message

1 9 17
 2 10 18
 3 11 19
 4 12 20
 5 13 21
 6 14 22
 7 15 23
 8 16 24

Display/Edit
 Hex ASCII Decimal

Size
 Number bytes: 4

Contents

1-8	1	30	COPY PASTE
	2	30	
	3	21	
9-16	4	0D	
	5		
	6		
17-24	7		
	8		
25-32			

RS232 Input config

Select Message

1 9 17
 2 10 18
 3 11 19
 4 12 20
 5 13 21
 6 14 22
 7 15 23
 8 16 24

Display/Edit
 Hex ASCII Decimal

Size
 Number bytes: 4

Contents

1-8	1	30	COPY PASTE
	2	30	
	3	21	
9-16	4	0D	
	5		
	6		
17-24	7		
	8		
25-32			

Name: READY

Also used by: None

Done

RS232 Output config

Select Message

1 9 17
 2 10 18
 3 11 19
 4 12 20
 5 13 21
 6 14 22
 7 15 23
 8 16 24

Display/Edit
 Hex ASCII Decimal

Size
 Number bytes: 4

On level: 1

Contents

1-8	1	20	COPY PASTE
	2	02	
	3	FE	
9-16	4	0d	
	5		
	6		
17-24	7		
	8		
25-32			

Name: Proj on

Also used by: None

Done

The Input and Output configuration tool are identical except for the 'On Level' box in the Output configuration tool.

Once you have selected the message to edit you have a choice of entering the information as Hex, ASCII or Decimal. Just select the radio button in the Display/Edit box for the format required and this will change the contents display to the selected format.

Next select the number of bytes. In the above examples this is set as four but can be from 0 bytes (not very useful) up to 32 bytes. Eight can be viewed at a time with the four buttons to the left of the contents box allowing viewing of the groups.

Now enter the contents for the individual bytes.

For Hex two digits from 00 to FF.

For ASCII a single character with all keyboard characters valid.

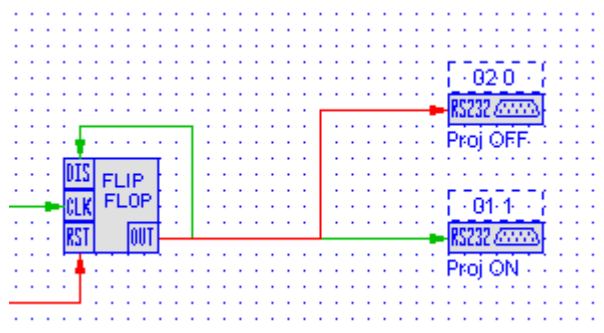
For Decimal up to 3 digits from 0 to 255 with no leading zeros.

In all cases you can use the nudge buttons to select next or last. It is also permissible to swap between Hex, ASCII and Decimal for different bytes.

If you need additional or fewer bytes just change the number with the Size buttons

Copy and paste are used to copy settings from one message to another. This is particularly useful for source select and similar where most of the string is the same with only a few characters changed.

On the Serial Output only you can set the ON Level. If set to 1 the string will be transmitted on a low to high transition, typically a flip-flop setting. When set to 0 the string is transmitted on a High to Low transition, typically a flip-flop clearing.



Click on DONE when complete and don't forget to Save the changed program either under the same file name or use Save As for a different name.

IKON AVS LTD

Unit 238 IKON Estate, Droitwich Road, Hartlebury, Worcestershire. DY10 4EU
Tel:- 01299-250991 Fax:- 01299-250983 email:- sales@ikonavs.com